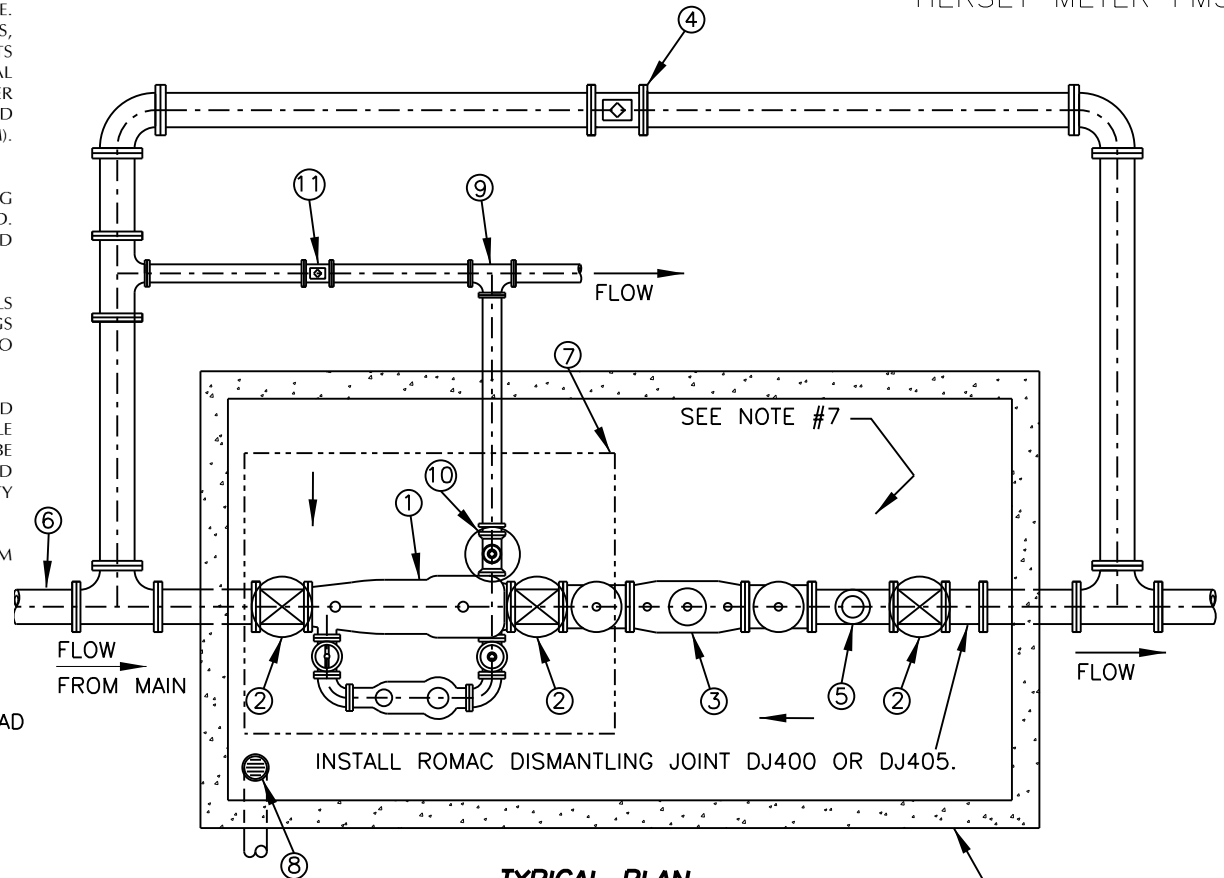


1. ALL PIPING TO HAVE A MIN. 12" CLEARANCE ABOVE FLOOR, 24" ON SIDES, & 12" ON TOP (12" FROM TOP OF VALVE STEM TO UNDERSIDE OF LID).
2. METER VAULT SHALL BE PRECAST CONCRETE OR CONSTRUCTED IN-PLACE. PRECAST CONCRETE VAULTS SHALL BE MANUFACTURED BY BARGER AND SONS, SHERMAN DIXIE, OR SBCUD APPROVED EQUAL. CONSTRUCTED IN-PLACE VAULTS SHALL BE DESIGNED AND STAMPED BY TENNESSEE LICENSED PROFESSIONAL ENGINEER. SHOP DRAWINGS FOR VAULTS SHALL BE SUBMITTED FOR OWNER REVIEW PRIOR TO CONSTRUCTION. SHOP DRAWINGS SHALL IDENTIFY SIZE AND PLACEMENT OF STEEL REINFORCEMENT. CONCRETE SHALL BE 4,000 PSI (MINIMUM). SUBMIT CONCRETE MIX DESIGN FOR SBCUD REVIEW.
3. ACCESS INTO VAULT SHALL BE THROUGH 42-INCH X 42-INCH CLEAR OPENING WITH ALUMINUM HATCH. HATCH SHALL BE RATED FOR AASHTO H-20 LOAD. HATCH SHALL BE MANUFACTURED BY HALLIDAY PRODUCTS, BILCO, OR SBCUD APPROVED EQUAL.
4. ALL PIPING, METER, VALVES, FITTINGS, VAULT ACCESSORIES, AND MISC. MATERIALS SHALL BE FURNISHED AND INSTALLED BY OWNER/DEVELOPER. SHOP DRAWINGS FOR ALL MATERIALS SHALL BE SUBMITTED FOR OWNER REVIEW PRIOR TO CONSTRUCTION.
5. OWNER/DEVELOPER IS RESPONSIBLE FOR PURCHASING, INSTALLING AND MAINTAINING THE BACKFLOW PREVENTER. OWNER/DEVELOPER IS RESPONSIBLE FOR ANNUAL TESTING OF THE BACKFLOW PREVENTOR. TESTING SHALL BE PERFORMED BY A TDEC (TENNESSEE DEPARTMENT OF ENVIRONMENT AND CONSERVATION) CERTIFIED TESTER. THE COST OF TESTING IS THE RESPONSIBILITY OF THE OWNER/DEVELOPER.
6. FURNISH AND INSTALL SOLID CONCRETE BLOCK TO SUPPORT ASSEMBLY, MINIMUM 4 PLACES.
7. SLOPE FLOOR TO DRAIN, 1/8" PER FT. (MINIMUM)

METER TYPE
HERSEY METER FM3



TYPICAL PLAN
SCALE NONE

MATERAILS SCHEDULE

- ① MUELLER SYSTEMS' HERSEY FM3 WITH BYPASS, RADIO READ FIRE METER (COMPOUND FIRE METER) (HOT ROD)
- ② NORMALLY OPEN GATE VALVE, STEM INDICATOR REQUIRED
- ③ DOUBLE CHECK VALVE ASS'Y. AMES MODEL 2000 DC S.S. [FOR FIRE PROTECTION SYSTEMS]
- ④ NORMALLY CLOSED GATE VALVE.
- ⑤ 4" TEE FLG., PUMPER CONNECTION W/ QUICK CONNECT. EXTEND TROUGH TOP OF VAULT. TERMINATE 3' ABOVE TOP OF BOX.
- ⑥ WATER SUPPLY FROM SYSTEM DISTRIBUTION.
- ⑦ 42"X42" DOOR OPENING ABOVE W/LADDER. ALUM. DOOR BY HALLIDAY PRODUCTS, BILCO OR SBCUD APPROVED EQUAL.
- ⑧ 4" DIAMETER FLOOR DRAIN. EXTEND 4" DI TO DAYLIGHT. INSTALL FLAP VALVE ON END OF PIPE.
- ⑨ DOMESTIC WATER CONNECTION TEE DUCTILE IRON

- ⑩ NORMALLY OPEN GATE VALVE.
- ⑪ NORMALLY CLOSED GATE VALVE.
- ⑫ ALL PIPING AND FITTINGS SHALL BE DUCTILE IRON.

TYPICAL DETAIL

South Blount County Utility District
INDUSTRIAL/COMMERCIAL METER PIT
(DOMESTIC AND FIREMAIN SERVICE)

Project	216.057	Proj. Mgr.	Designed By	Drawn By	Reference
Date	8/27/15				
Scale	N.T.S.				
Sheet	1 of 3				
No.		Revision/Issue		Date	

FIRE SERVICE PIT DETAIL

HIGH DEMAND CUSTOMER



808 WEST LAMAR ALEXANDER PARKWAY
MARYVILLE, TN 37801
OFFICE: 865.982.3560
FAX: 865.984.8330
www.southblountutility.org